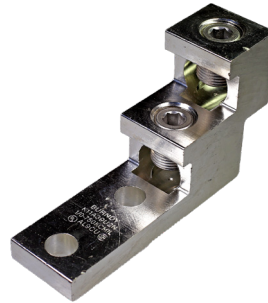
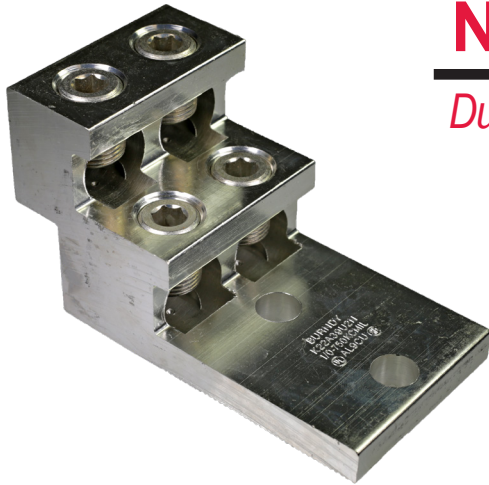


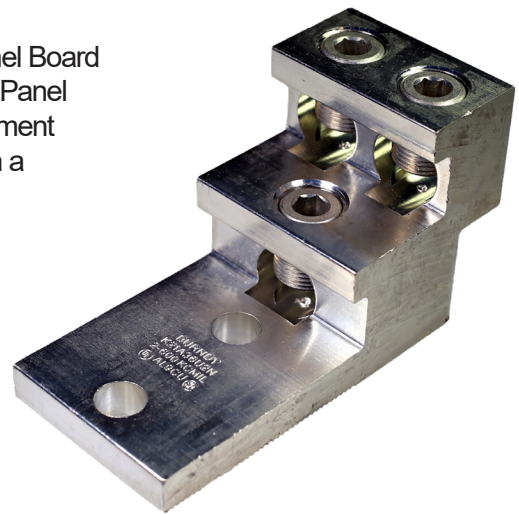
NEMA Spaced Panel Board Lugs

Dual Rated AL9CU for both copper and aluminum conductor



We are pleased to announce the expansion of our line of Aluminum Panel Board Terminals. These 6 new configurations have NEMA spaced stud holes. Panel board connectors allow multiple conductors to be terminated onto equipment pads, bus bars, or other electrical equipment. The conductor ports are in a stacked arrangement to save space.

These new terminals are Listed to the UL Wire Connector Standards UL486A-486B and are CSA Certified to C22.2 No. 65. They are also AL9CU Dual Rated for use with Copper or Aluminum conductors. Two sizes are available and each has a configuration to accommodate 2, 3, or 4 conductors.



Features & Benefits

- Dual Rated AL9CU for both copper and aluminum conductor
- 600 Volt Rated
- UL Listed UL486A-486B; CSA Certified C22.2 No. 65
- Range taking conductor ports
- Each size can accommodate up to 4 conductors
- 1/2" diameter stud holes spaced 1-3/4" apart (NEMA-spacing)



Customer Service 1-800-346-4175 | Tool Service Center 1-800-426-8720 | Technical Services 1-800-451-4956 | www.burndy.com